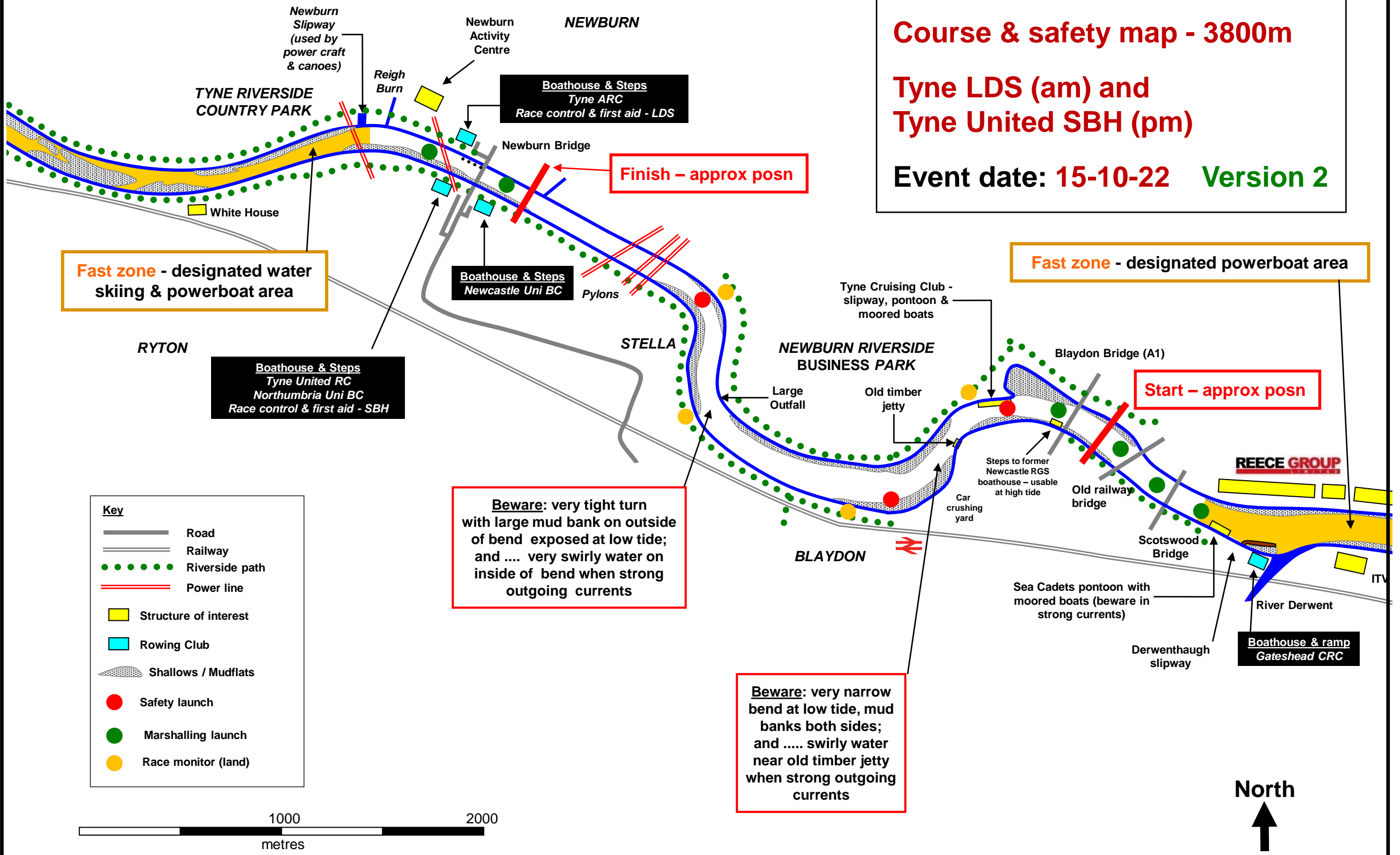


Tyne ARC & Tyne United RC

Course & safety map - 3800m

**Tyne LDS (am) and
Tyne United SBH (pm)**

Event date: 15-10-22 Version 2



Fast zone - designated water skiing & powerboat area

Fast zone - designated powerboat area

Finish - approx posn

Start - approx posn

Beware: very tight turn with large mud bank on outside of bend exposed at low tide; and very swirly water on inside of bend when strong outgoing currents

Beware: very narrow bend at low tide, mud banks both sides; and swirly water near old timber jetty when strong outgoing currents

Key	
	Road
	Railway
	Riverside path
	Power line
	Structure of interest
	Rowing Club
	Shallows / Mudflats
	Safety launch
	Marshalling launch
	Race monitor (land)

